



# International Monthly Market Update:

## January 2023

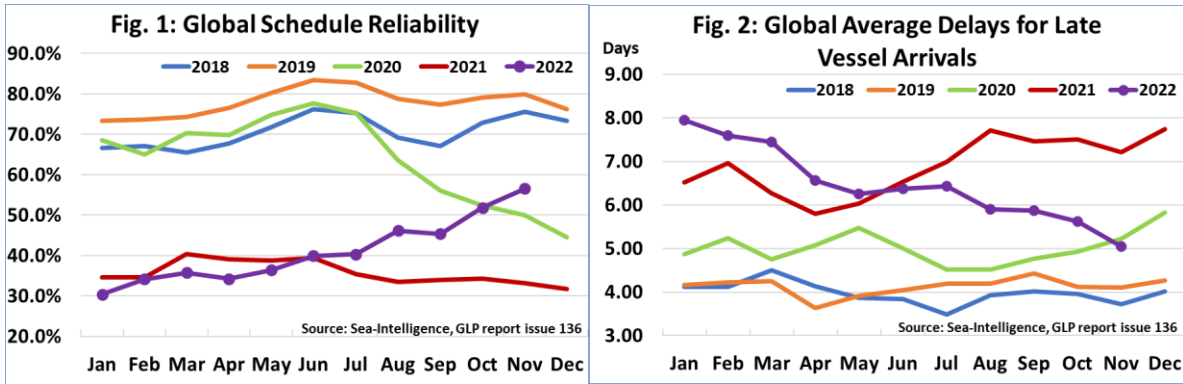


We are excited to welcome 2023 and wish all our customers the best for the New Year. You can continue to count on IL2000 for all your supply chain needs as we navigate the ever-changing market!

The Lunar New Year celebration is coming early this year, from January 21<sup>st</sup> - 29<sup>th</sup>. Please check with the international team well in advance to ensure arrangements can be made in due time for urgent shipments.

### **Carrier Announcements:**

- TPM23 is now scheduled to be held in Long Beach from February 26<sup>th</sup> - March 1<sup>st</sup>.
- Sea-Intelligence posted November results on schedule reliability. Improvement with the carriers continues, coming in at 57% compared to 30% at the beginning of last year. The average delay for late vessels has also improved, dropping over the previous three months.



(Source: [Sea-Intelligence](#))

- The last report from the Drewry World Container index shows that rate levels have flattened out, with the slowest rate decline in the last 24 weeks. The overall decline was just -0.3% from the previous week.

## China:

- Covid numbers continue to increase in China, with many factories forced to close and hospitals struggling to cope. Delays in courier services, primarily due to truck drivers falling ill, are causing significant disruptions in the overall supply chain. Reports state that exports to the US dropped over 25% in November compared with previous years. With destination markets down, this helped with the production delays. In addition, many factories have decided to start the New Year holiday early due to staffing issues.
- Space demand has remained soft for PSW/PNW/USEC and Gulf, with heavy roll over from carriers.
- Vessel delay at most base ports is one to two days, with no reported equipment shortages.

## Port Updates:

- Maersk's weekly vessel wait times show that the congestion is finally starting to clear, with a positive outlook for the new year.



Port	Line up	Vessel Waiting time	Yard	Gate	Rail
Newark PNCT	Green	0 days	Green	Green	Green
APMT Port Elizabeth	Yellow	0-2 days	Green	Green	Green
Philadelphia	Green		Green	Green	Green
Baltimore	Yellow	1-3 days	Red	Green	Green
Norfolk	Yellow	0-5 days	Green	Green	Green
Wilmington	Green		Green	Green	Green
Charleston	Green	0-12 hours	Green	Green	Green
North Charleston	Green	0 days	Green	Green	Green
Savannah	Red	0-8 days	Yellow	Yellow	Yellow
Jacksonville	Green		Green	Green	Green
Port Everglades	Green		Green	Green	Green
Miami - POMTOC	Yellow	0 days	Yellow	Green	Green
Tampa	Green		Green	Green	Green
Houston	Red	2-10 days	Yellow	Green	Green
New Orleans	Green	1-2 days	Green	Green	Green
Mobile	Green		Green	Green	Green
Long Beach	Green		Green	Green	Green
Los Angeles	Green		Green	Green	Green
Oakland	Green	0-3 days	Green	Green	Green
Seattle	Yellow	0 days	Yellow	Yellow	Yellow
Halifax	Green	1-2 days	Green	Green	Green
Montreal	Yellow	1-2 days	Yellow	Green	Green
Vancouver	Red	7 days	Red	Yellow	Red
Prince Rupert	Red	7 days	Red	Green	Yellow
Dutch Harbor	Green		Green	Green	Green
Kodiak	Green		Green	Green	Green

*Green = Normal    Yellow = Moderate Impact    Red = High Impact*

(Source: [Maersk](#))

## Air Freight:

- Quite abruptly, in mid-December, CMA CGM Air Cargo stopped selling its air freight services in the US. Officials at the company confirmed that they are no longer selling space to freight forwarders and declined to give a reason. The immediate cut-off of services shocked the industry regularly using CMA CGM Air Cargo to move shipments and jeopardized many delivery commitments.



## Customs:

- In late December, the USTR announced another extension to Section 301 exclusions. Instead of expiring at the end of 2022, the list of over 352 specific exclusions will expire on September 30<sup>th</sup>, 2023.

The international team is here to help with your logistic needs! Making Your Logistics Happen!

Reach out any time: [international@il2000.com](mailto:international@il2000.com)

**Sources:** CV International, Sea-Intelligence, Drewry, The Load Star, Freight Waves, Sinpex Connections, Maersk, CMA CGM